

PUNTO NIMA

San Jose del Cabo





Developers

Located in one of Mexico's most captivating coastal cities, Punto Nima is a beautiful luxury residential development.

Maximizing common areas with stunning views, this residential building is designed with diverse amenities of the highest quality, such as a fully equipped gym, pickleball court, rooftop pool, poolside bar, and much more.

Designed to shelter functional and organic spaces with style, Punto Nima offers an elegant yet casual way of living in San Jose del Cabo.

Punto Nima is a joint venture between real estate investment fund Fortem Capital and architectural firm Central de Arquitectura.

Fortem Capital was founded in 2018 by Miguel Sanchez Navarro with the objective of managing a private equity real estate investment fund in Mexico. Fortem Capital develops integral real estate investment programs that generate value and strengthen relationships with its investors by providing quality services with profitable results. Prior successes in this vein include Fortem Capital's 2018 debut in the Baja market with projects such as Al Mar residential, Hotel Perla in La Paz, and Hotel Tropicana Inn in San Jose del Cabo.

Central de Arquitectura was founded by Jose Sanchez and Moises Ison in 1998. Drawing on the company's wealth of experience in the fields of financial planning, architectural design, construction, and real estate, Central de Arquitectura is well versed at creating functional product that simultaneously delivers residences of the highest quality. To Central de Arquitectura details are everything, both architecturally speaking and in everything they do.

Central de Arquitectura projects



Sonora Gill Prime, Monterrey



Nima Bay, Puerto Vallarta



Casa Peña, Valle de Bravo



Magia Playa, Playa del Carmen



Urban Center, Cancún

FORTEM projects



About the location

The project is located in the San Jose del Cabo Commercial Zone. It sits in a privileged corner in the Hotel corridor of the city, a few steps from the beach, the San Jose Club Campestre, the FONATUR Golf Course, and multiple shops, coffee shops and restaurants.





- 1 Club Campestre golf course
- 2 Supermarket
- 3 Hyatt Place
- 4 Las Palmas beach
- 5 Cabo Dolphins
- 6 Supermarket
- 7 Viceroy
- 8 Barcelo



- 6 min
- 4 min
- 1 min
- 2 min
- 1 min
- 5 min
- 2 min
- 2 min



- 30 min
- 9 min
- 1 min
- 5 min
- 3 min
- 3 min
- 11 min
- 14 min

- 9 FONATUR golf course
- 10 Complejo Cabo Azul
- 11 Costa Azul beach
- 12 Estuary
- 13 Downtown
- 14 To Puerto Los Cabos



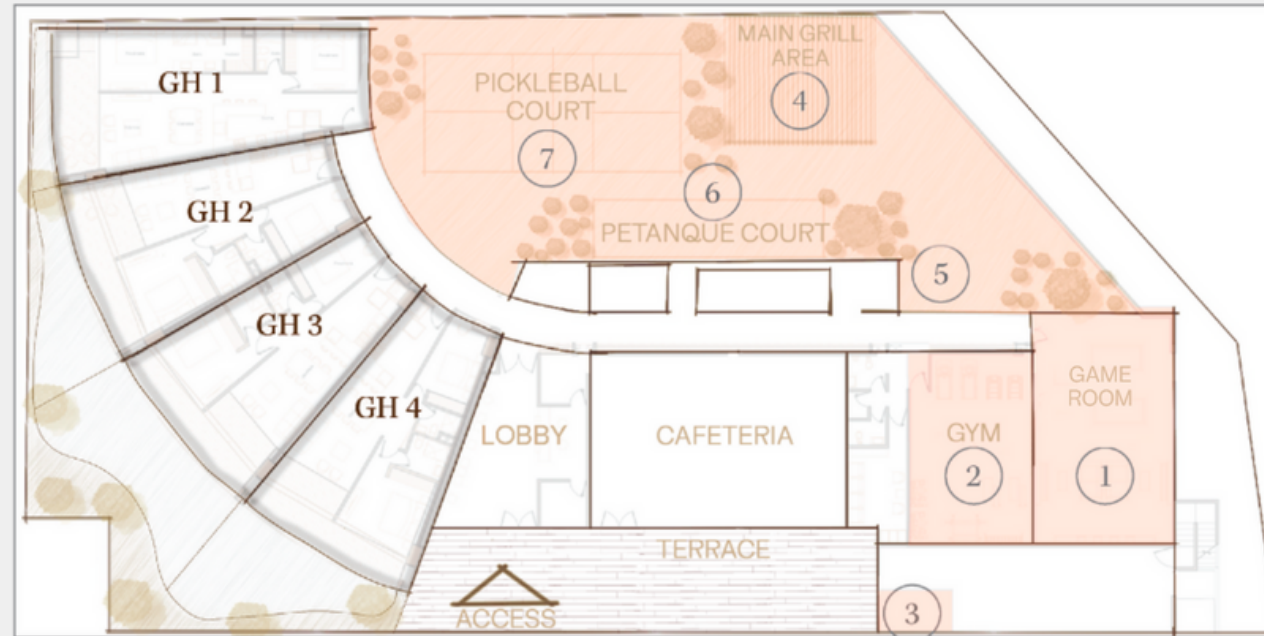
- 5 min
- 3 min
- 4 min
- 5 min
- 10 min
- 7 min



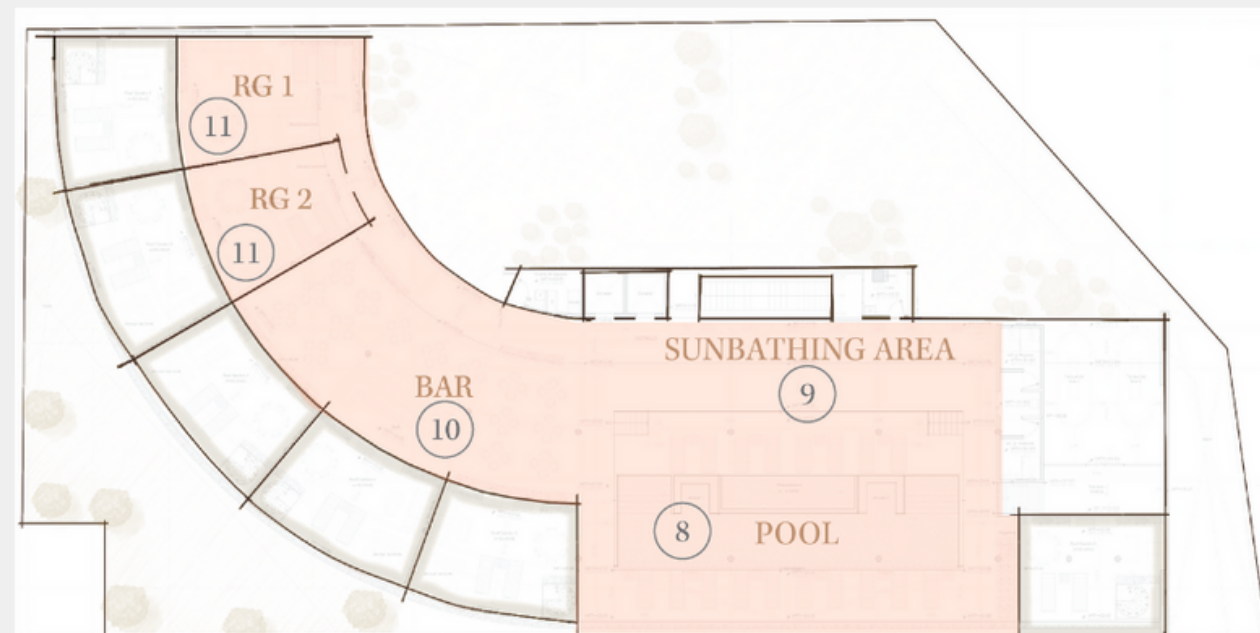
- 20 min
- 17 min
- 27 min
- 15 min
- 10 min
- 20 min



Ground floor



Roof Top



1. Game room
2. Gym
3. Laundry
4. Main grill area
5. Playground
6. Bocce ball court
7. Pickleball court
8. Pool
9. Sunbathing area
10. Restaurant Bar
11. Private event area













COMFORT





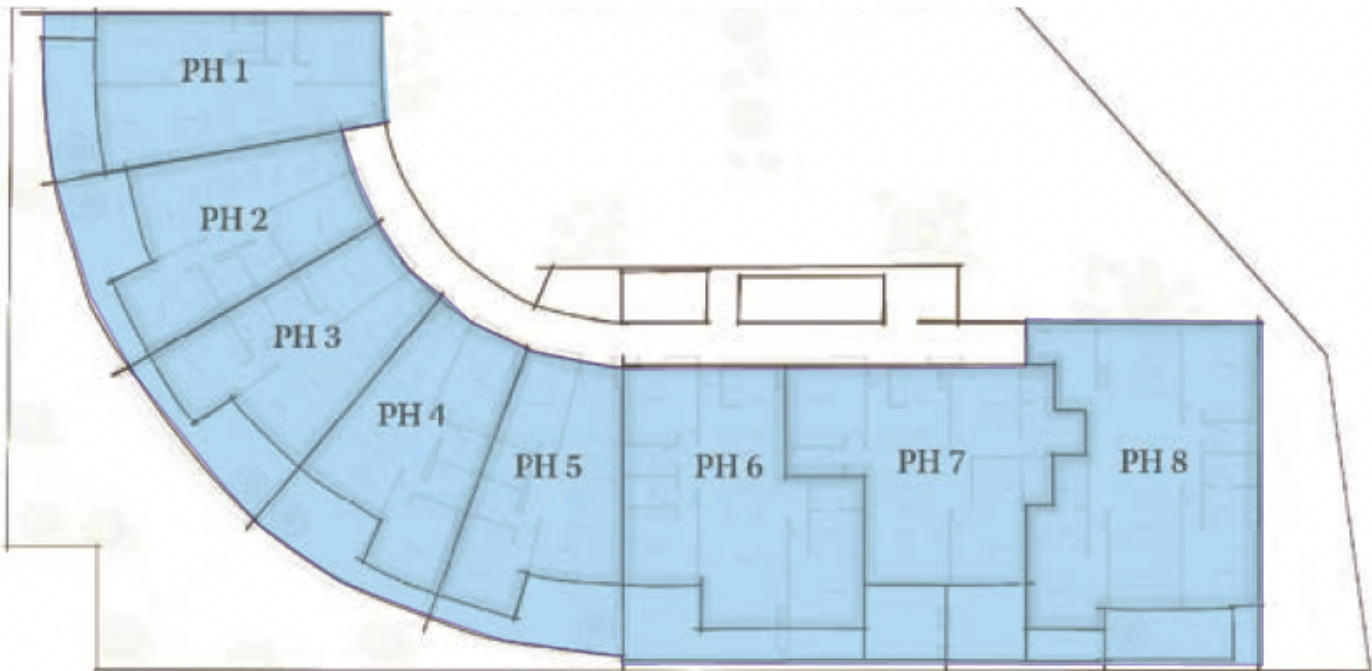
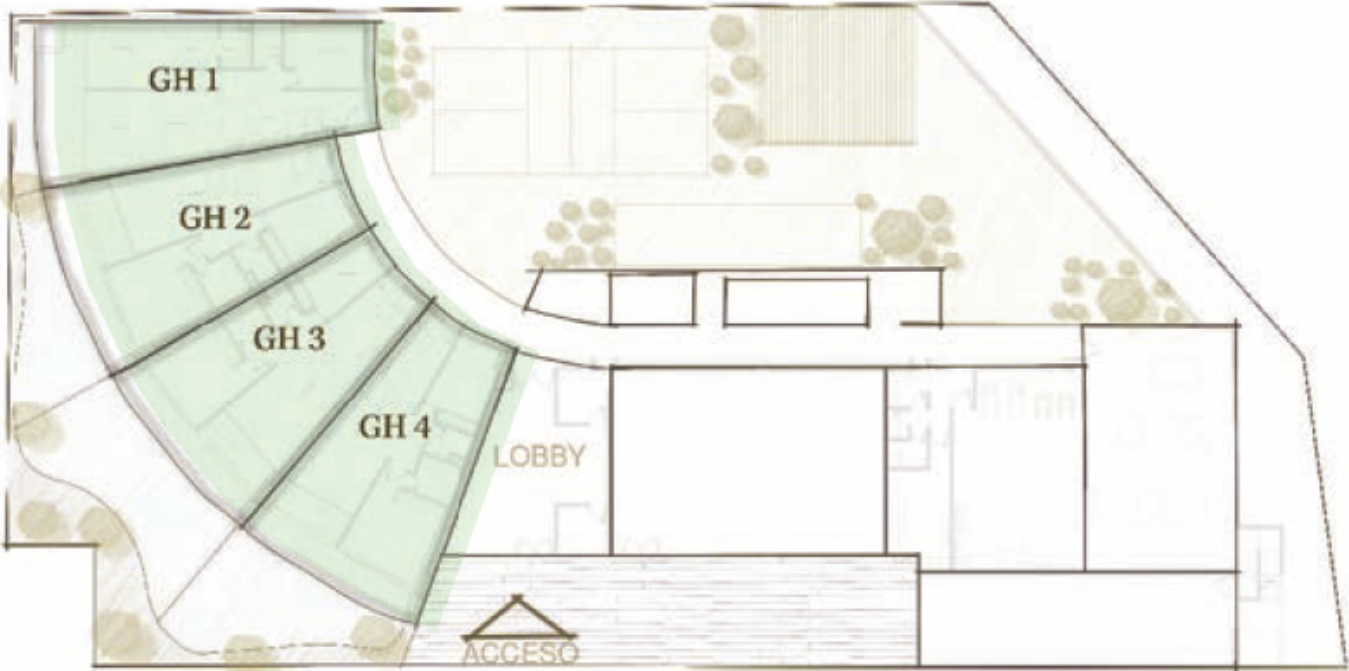
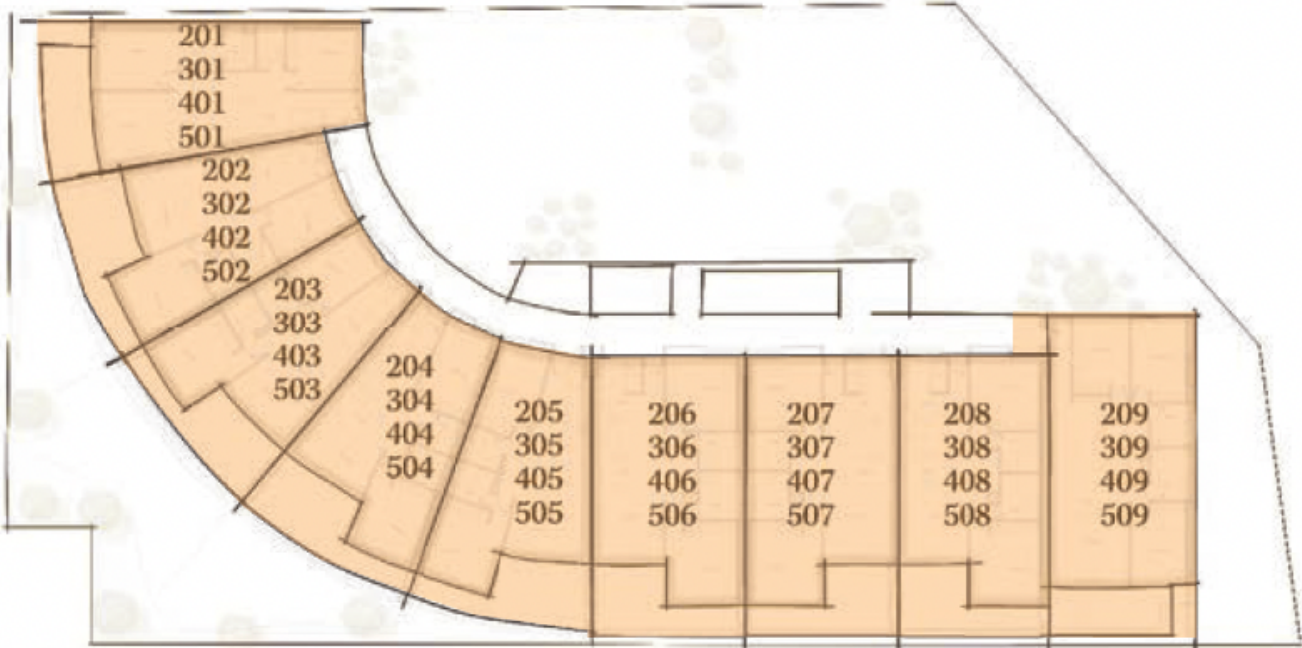




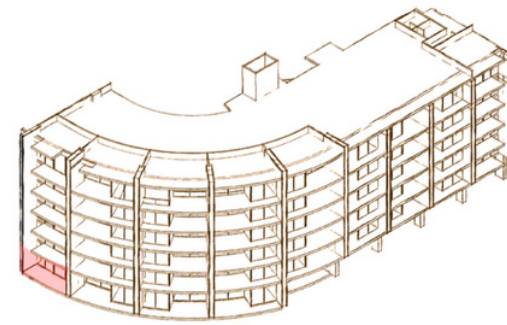
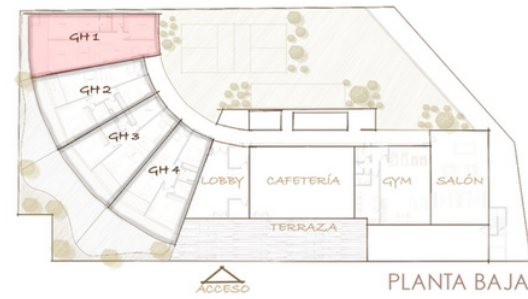
LAYOUTS

Residences

- Garden House units
- Central units
- Penthouse units



MIGRIÑO

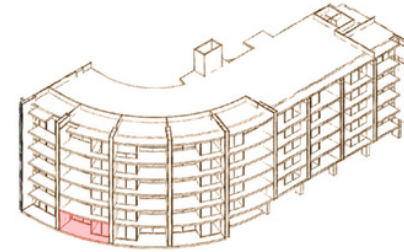


GH-1

- 2 Bedrooms
- 2 Bathrooms
- Total area: 1332.46 sqft | 123.79 m²
- AC: 990.39 sqft | 92.01 m²
- Terrace: 233.04 sqft | 21.65 m²
- Garden 109.04 sqft | 10.13 m²

In a constant effort to improve this product, the developer reserves the right to change the plants and specifications. All images are illustrative and may change.

CERRITOS

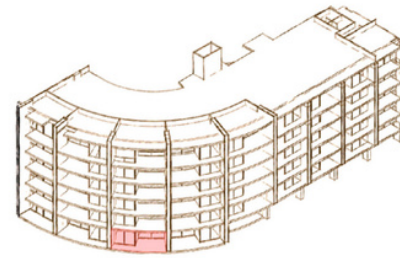


GH-02

- 2 Bedrooms
- 2 Bathrooms
- Total area: 1441.50 sqft | 133.92 m²
- AC: 862.51 sqft | 80.13 m²
- Terrace: 266.41 sqft | 24.75 m²
- Garden 312.58 sqft | 29.04 m²

In a constant effort to improve this product, the developer reserves the right to change the plants and specifications. All images are illustrative and may change.

CERRITOS

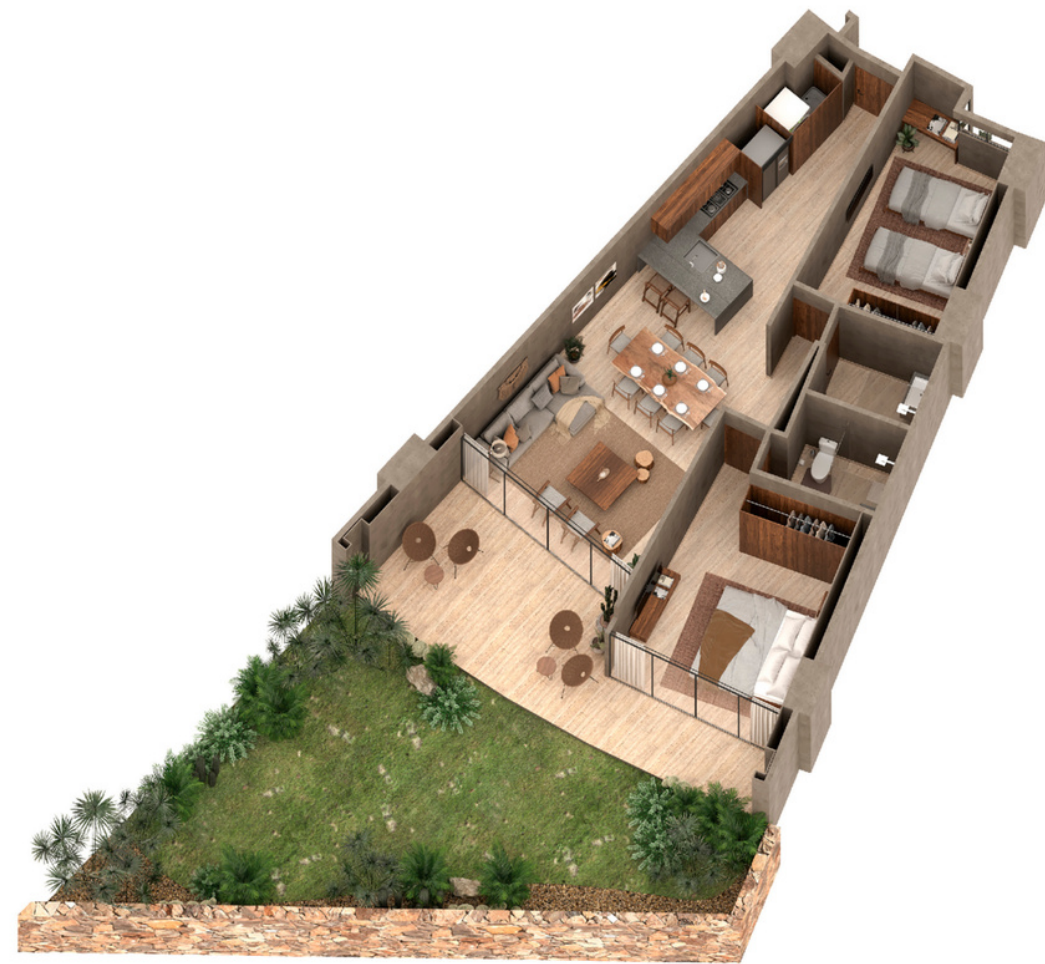
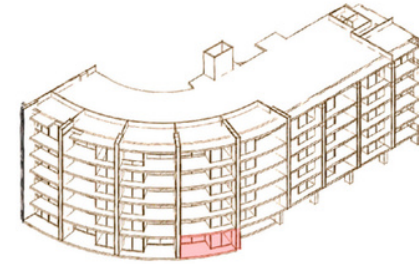
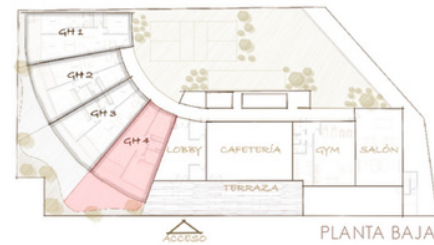


GH-03

- 2 Bedrooms
- 2 Bathrooms
- Total area: 1687.03 sqft | 156.73 m²
- AC: 862.51 sqft | 80.13 m²
- Terrace: 266.41 sqft | 24.75 m²
- Garden 558.11 sqft | 51.85 m²

In a constant effort to improve this product, the developer reserves the right to change the plants and specifications. All images are illustrative and may change.

CERRITOS

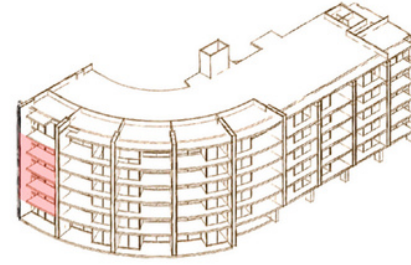
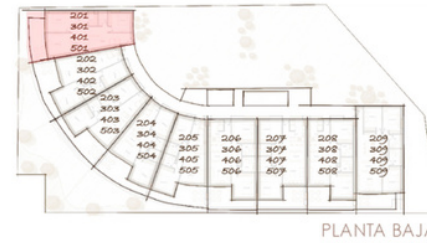


GH-04

- 2 Bedrooms
- 2 Bathrooms
- Total area: 1573.79 sqft | 146.21 m²
- AC: 862.51 sqft | 80.13 m²
- Terrace: 266.41 sqft | 24.75 m²
- Garden 444.87 sqft | 41.33 m²

In a constant effort to improve this product, the developer reserves the right to change the plants and specifications. All images are illustrative and may change.

MIGRIÑO

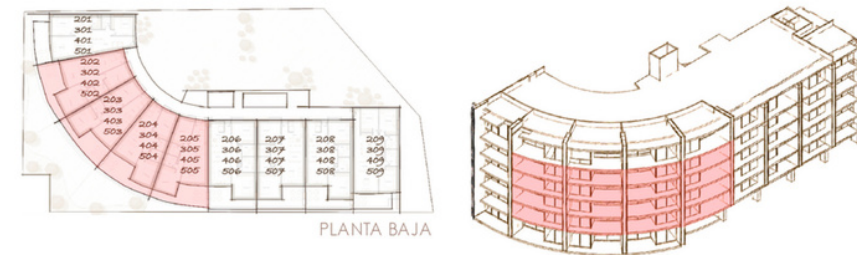


PT-01

- 2 Bedrooms
- 2 Bathrooms
- Total area: 1193.50 sqft | 110.88 m²
- AC: 990.39 sqft | 92.01 m²
- Terrace: 203.11 sqft | 18.87 m²

In a constant effort to improve this product, the developer reserves the right to change the plants and specifications. All images are illustrative and may change.

CERRITOS

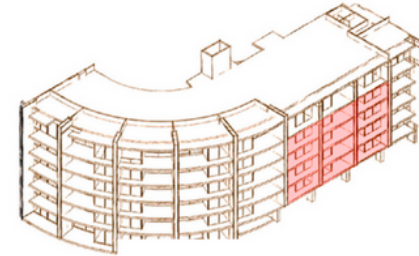
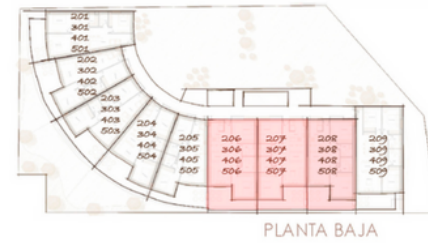


PT-02 · PT-05

- 2 Bedrooms
- 2 Bathrooms
- Total area: 1128.92 sqft | 104.88 m²
- AC: 862.51 sqft | 80.13 m²
- Terrace: 266.41 sqft | 24.75 m²

In a constant effort to improve this product, the developer reserves the right to change the plants and specifications. All images are illustrative and may change.

ENSENADA

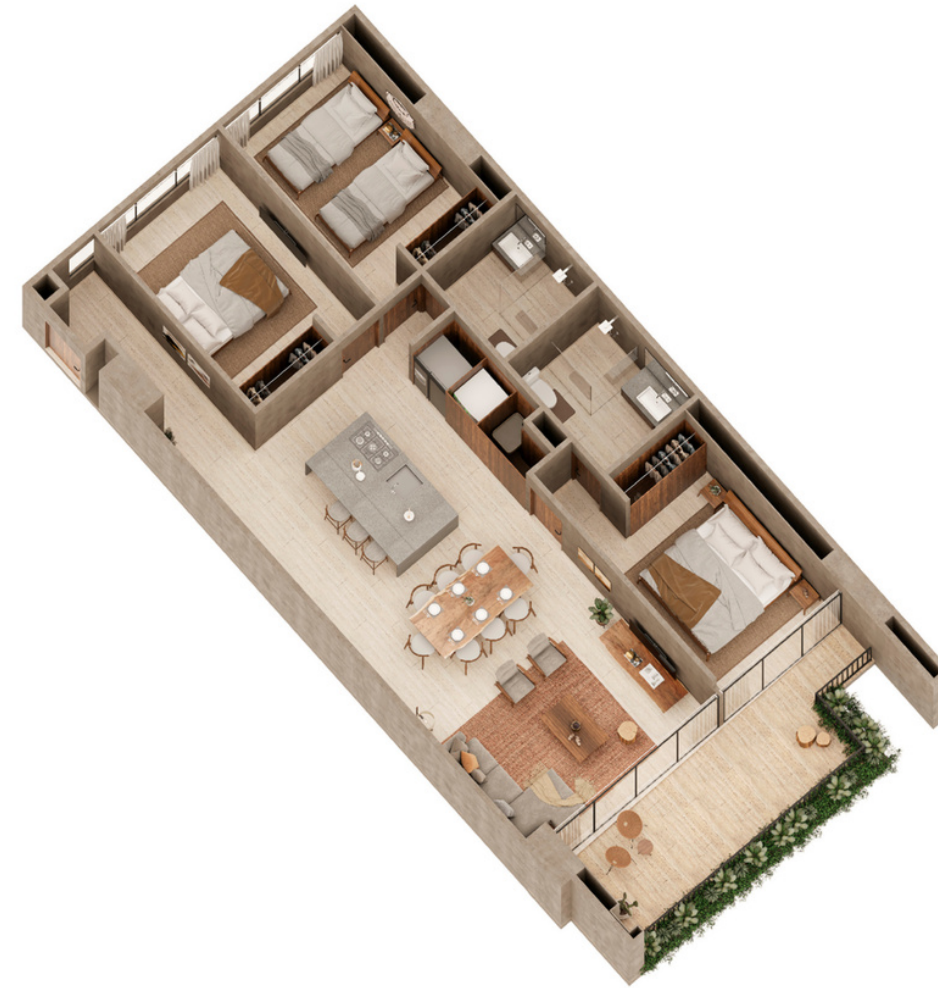
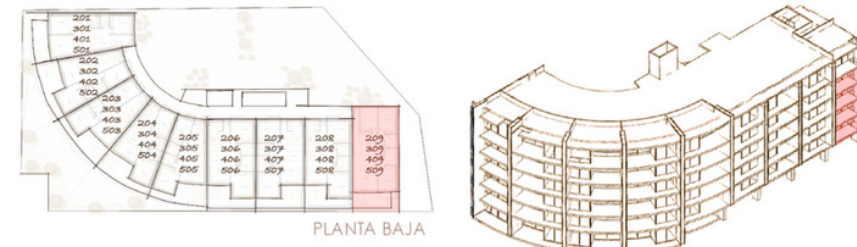


PT-06 · PT-08

- 2 Bedrooms
- 2 Bathrooms
- Total area: 1212.55 sqft | 112.65 m²
- AC: 996.31 sqft | 92.56 m²
- Terrace: 216.25 sqft | 20.09 m²

In a constant effort to improve this product, the developer reserves the right to change the plants and specifications. All images are illustrative and may change.

ROSARITO

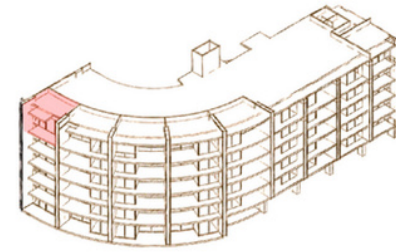
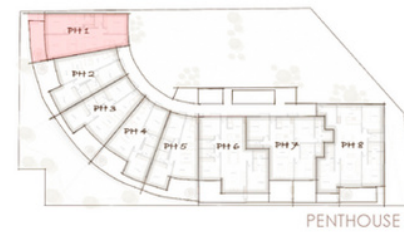


PT-09

- 3 Bedrooms
- 2 Bathrooms
- Total area: 1372.61 sqft | 125.93 m²
- AC: 1178.97 sqft | 109.53 m²
- Terrace: 193.64 sqft | 16.4 m²

In a constant effort to improve this product, the developer reserves the right to change the plants and specifications. All images are illustrative and may change.

MIGRIÑO

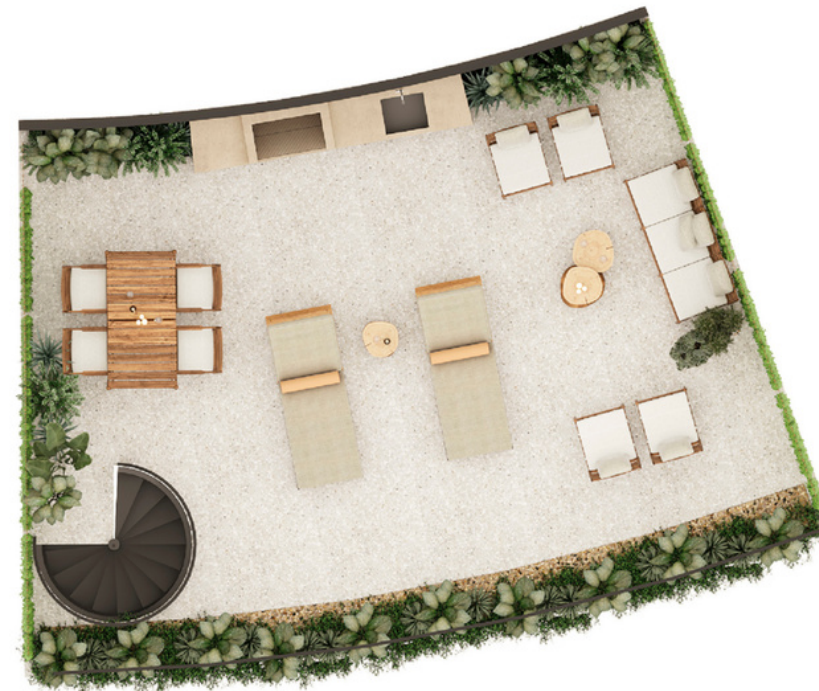
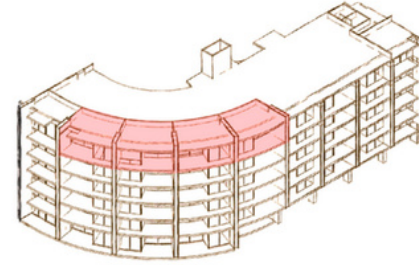
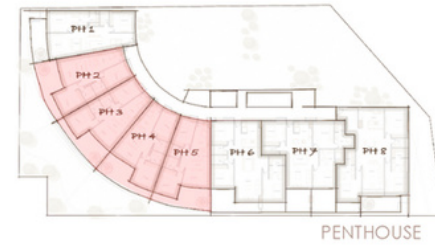


PH-01

- 2 Bedrooms
- 2 Bathrooms
- Total area: 1749.35 sqft | 162.52 m²
- AC: 990.39 sqft | 92.01 m²
- Terrace: 203.11 sqft | 18.87 m²
- Rooftop: 555.85 sqft | 51.64 m²

In a constant effort to improve this product, the developer reserves the right to change the plants and specifications. All images are illustrative and may change.

CERRITOS

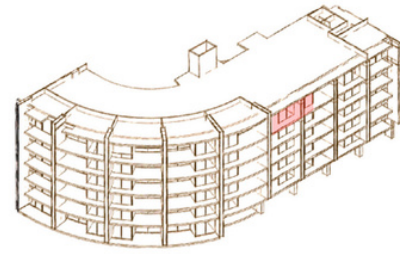
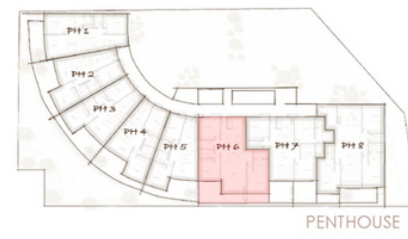


PH-02 • PH-05

- 2 Bedrooms
- 2 Bathrooms
- Total area: 1741.17 sqft | 161.52 m²
- AC: 861.33 sqft | 92.01 m²
- Terrace: 266.41 sqft | 18.87 m²
- Rooftop: 613.43 sqft | 56.99 m²

In a constant effort to improve this product, the developer reserves the right to change the plants and specifications. All images are illustrative and may change.

BALANDRA



PH-06

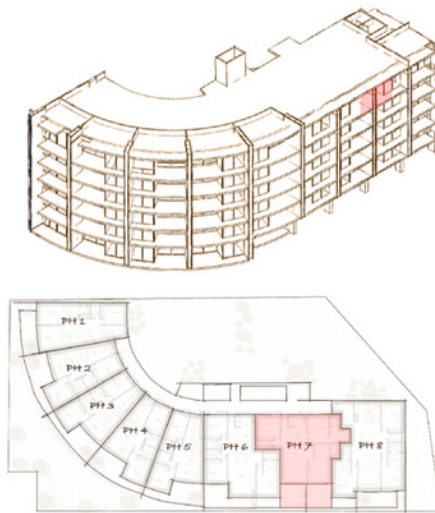
- 3 Bedrooms
- 3 Bathrooms
- Total area: 1604.14 sqft | 149.03 m²
- AC: 1320.52 sqft | 122.68 m²
- Terrace: 283.63 sqft | 26.35 m²

In a constant effort to improve this product, the developer reserves the right to change the plants and specifications. All images are illustrative and may change.

CORONADO



PENTHOUSE

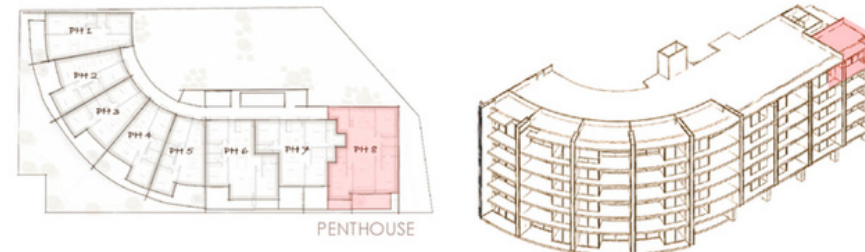


PH-07

- 3 Bedrooms
- 3 Bathrooms
- Total area: 1582.51 sqft | 147.02 m²
- AC: 1272.08 sqft | 118.18 m²
- Terrace: 310.43 sqft | 28.84 m²

In a constant effort to improve this product, the developer reserves the right to change the plants and specifications. All images are illustrative and may change.

PUNTA ARENA



PH-08

- 3 Bedrooms
- 3 Bathrooms
- Total area: 2329.85 sqft | 216.45 m²
- AC: 1544.83 sqft | 143.52 m²
- Terrace: 277.28 sqft | 25.76 m²
- Rooftop: 507.73 sqft | 47.17 m²

In a constant effort to improve this product, the developer reserves the right to change the plants and specifications. All images are illustrative and may change.

 PUNTO NIMA

